



PART-TIME MBA

ESMT BERLIN

THE MBA PROGRAM THAT FITS
AROUND YOUR SCHEDULE
AND EMPOWERS YOU TO DRIVE
INNOVATION

Index

WELCOME AND KEY PROGRAM FACTS	4-5
-------------------------------	-----

PROGRAM STRENGTHS	6-7
-------------------	-----

CURRICULUM AND TIMELINE	8-9
-------------------------	-----

CAREER DEVELOPMENT	10-11
--------------------	-------

CLASS PROFILE	12-13
---------------	-------



**FROM THE
HEART OF
EUROPE WE
CREATE AND
IMPART NEW
KNOWLEDGE
TO ADVANCE
BUSINESS AND
SOCIETY.
WE DEVELOP
ENTREPRENEURIAL
LEADERS WHO
THINK GLOBALLY
AND ACT
RESPONSIBLY.**



WELCOME - WILLKOMMEN



**Studying for an MBA usually involves trade-offs.
With the Part-time MBA from ESMT Berlin, you can turn OR into
AND:**

- Keep your current job AND level-up your career by learning vital new management and leadership skills
- Study at your own pace online AND network with new and interesting classmates in-person
- Experience the breadth of an MBA program AND focus on business innovation and digital business
- Learn from a world-class faculty AND trade experiences with like-minded professionals and managers
- Join an international program (classmates, faculty, content) AND be rooted in Germany

The ESMT Part-time MBA is a comprehensive two-year program that has been designed for people just like you. It combines the best of both worlds so choose AND and get ready for the ride! I very much look forward to supporting you during your journey.



Prof. Urs Mueller
Faculty Lead, Part-time MBA Program



KEY FACTS



TOP-RANKED
#1 business school in Germany



MBA DEGREE
Triple accredited
globally-recognized



FORMAT
Blended delivery:
75% online - 25% in person



LANGUAGE
English



IN-PERSON
Career support



BERLIN
In-person residencies take place at our campus in Berlin, Germany's political and cultural capital and one of Europe's biggest startup hubs.



14 RESIDENCIES
OVER 2 YEARS
42 days (28 of which are Mon-Fri)



FOCUS
Technology and Innovation



LEARNING PLATFORM
Designed for business education



Lioba Lawrenz
Part-Time MBA Student

Co-Founder & Owner
at LogiSpot GmbH

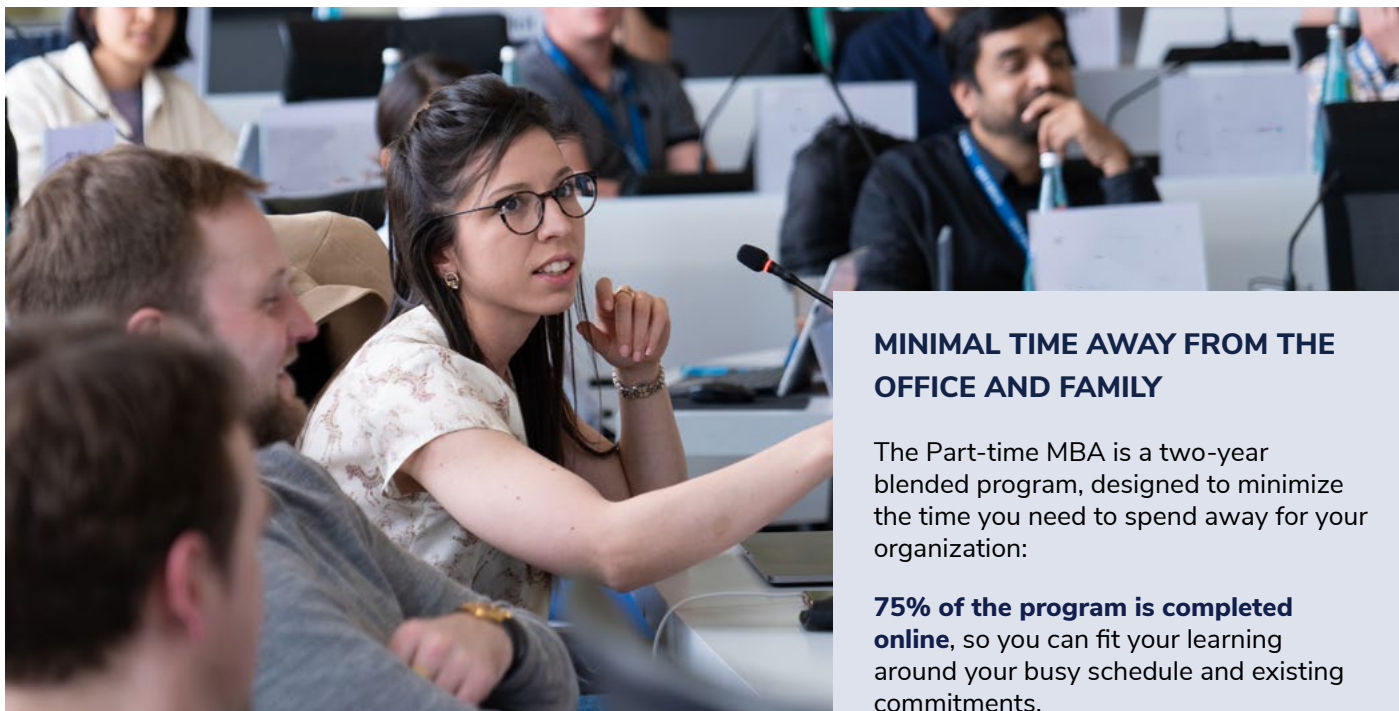
I specifically wanted a program that allowed me to combine studying with my full-time work schedule and also offer amazing networking opportunities with fellow students. The blended format of the part-time MBA is a perfect fit for me!



Anastasiia Miroshnichenko
Part-Time MBA Student

Technical Project Manager / Client
Relationship Manager at Hololux

The ESMT Berlin Part-time MBA program is specifically designed for individuals like me who want to maintain work-life balance while investing in self-development. I want to enhance my career and gain knowledge in management and entrepreneurship. As a mother, founder of a coffee startup – FreshBean – and software developer, my days are full! Time management, discipline, solving problems one at a time and a good cup of coffee are my keys to success.



PROGRAM STRENGTHS

MINIMAL TIME AWAY FROM THE OFFICE AND FAMILY

The Part-time MBA is a two-year blended program, designed to minimize the time you need to spend away from your organization:

75% of the program is completed online, so you can fit your learning around your busy schedule and existing commitments.

25% of the program takes place in-person, all but two run Thursday afternoon to Saturday evening.

This means you'll only need to spend 28 days away from the office over two years.

The Part-time MBA is an ideal way to continue working full-time while earning a globally-recognized MBA. Accelerate your career, enhance your expertise, and build your network all in one program.

INNOVATION IN THE AGE OF DIGITAL COMPETITION

The ESMT Berlin Part-time MBA will help you gain skills and insights to support both your personal development, and the growth and transformation of your company.

In addition to learning about essential MBA topics, take courses specifically designed to address challenges such as: Customer Centricity, Entrepreneurial Strategy and Innovation, Digital Business, Agile Leadership.

INTERNATIONAL STUDY OPTION

In March of your second year, you can take part in a weeklong international study module at one of our partner schools in the Global Network for Advanced Management (GNAM). Available courses change annually. Previous Network Weeks have included electives such as:

- Behavioral Science of Management (Yale School of Management)
- Open Innovation and Entrepreneurship (Technion – Israel Institute of Technology)

- Market Design: emerging market perspective (IIM Bangalore)
- Sustainable Development, Moving from Concept to Strategy (INCAE) ... and many more.

Credits earned during the GNAM Network Week can be used to substitute for other ESMT courses. Availability is limited and cannot be guaranteed.

YOUR STUDY EXPERIENCE

What can you expect from your Part-time MBA learning experience?

- Expect to spend around 15 hours a week on your studies
- Online study can be tackled at your own pace
- Course materials include mini-lectures and interactive activities
- Courses contain a mixture of group and independent study
- Assessments take place through a series of assignments and projects

THE HUB, THE WORLD'S MOST INNOVATIVE LEARNING PLATFORM

Your online learning experience at ESMT is powered by the world's most innovative learning platform; the Hub.

The Hub is the only online learning platform designed specifically for business education. It allows you to access course content, engage with faculty and peers through channels, track your progress, and assess your achievements.

Behind the scenes, the ESMT Learning Innovation Lab works closely with professors and partners to stay up-to-date with the latest knowledge, learning models and techniques and deliver the most impactful educational experience.

Experience life as a Part-time MBA student with our [interactive Hub demo](#).

BENEFITS FOR YOU AND YOUR EMPLOYER

Studying in the ESMT Part-time MBA will deliver benefits to you AND your employer.

How you benefit

- You can accelerate your career while you study
- You will be able to apply what you've learned immediately
- You will learn from peers while building your network
- The blended format reduces the time you will need to spend away from work and family

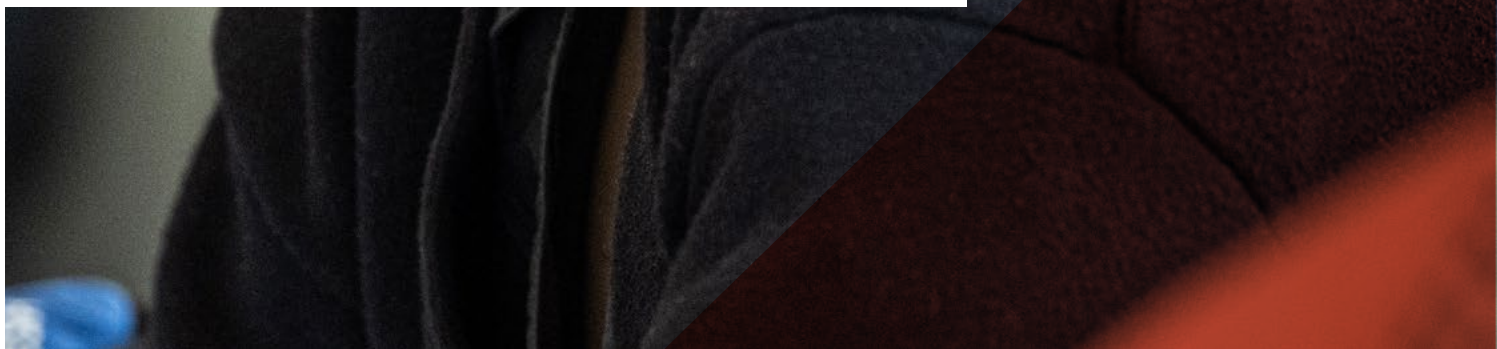
How your employer benefits

- You will only be away from the office for 28 days over two years
- The value you deliver to your employer will grow as you progress through the program
- You will bring new ideas to the workplace
- Your perspective will change as you develop personally and professionally





PART-TIME MBA CURRICULUM AND TIMELINE



Module 1: Preparation

- Building High-Performance Teams
- Introduction to General Management
- Business Economics
- Data Analytics for Managers

Module 2: Foundation

- Accounting
- Data and Decisions
- People, Teams and Organizations

Module 3: Pillars

- Ethics and Responsibility
- Operations Management
- Financial Management

Module 4: Structure

- Marketing and Sale in a Digital World
- Agile Leadership

Module 5: Monetization

- Entrepreneurial Strategy
- Entrepreneurship (New Business Creation)

Module 6: Connections

- Customer Centricity
- Customer Analytics in the Digital Age
- Matchmakers in the Digital Economy
- Optional: GNAM week; Network Courses

Module 7: Customization

- Innovation Policy and Regulation
- Human Factors of Innovation
- Doing Business Sustainably
- International Field Seminar

Module 8: Capstone

- Final Report

Curriculum and course availability are subject to change at any time. Visit our [website](#) for the latest updates.

Blended courses combine online and face-to-face learning in an ideal 75:25 split. You get the best of both worlds – innovative learning and network building.

25% of your program takes place in person over 14 residencies. The program starts with a full week residency in Berlin, and concludes with a 1-week international study tour. In between, you'll join 2.5 day residencies (Thursday lunchtime to Saturday evening) in Berlin. The classroom setting allows for discussion, network building and peer-to-peer learning while giving you direct access to ESMT's world-class faculty.

During residencies you will also take part in personal development courses on a range of topics such as building high performance teams, presentation effectiveness, intercultural communications, consulting skills, project management, and more.

In the elective phase, gain more international experience by studying at one of many partner schools either in person (Network Week), or online (Network Course).



CAREER DEVELOPMENT

Throughout the program, the Career Development Center is here to help your short- and long-term career development. If you are seeking a new direction, career experts will help you improve your profile and provide networking opportunities through company visits and career fairs that take place online and on campus. Irrespective of your personal career goals, you will be able to expand your professional network and lay the ground for the next phase of your career.

Networking is, and will be, a key element of your next career step. The Career Development Center is dedicated to connecting you with ESMT alumni in varied industries, potential employers, recruiters and business leaders from an array of sectors.

The on- and offline career services available to you as a Part-time MBA student include:



**Face-to-face
Career counseling**



Career webinars



**Tools and resources
through our Career Portal**



Hands-on workshops



ESMT job platform



**Annual career fair
On campus in Berlin**



Networking events



ESMT alumni platform

Part-time MBA careers



PUT YOUR LEARNING INTO PRACTICE AT YOUR OWN COMPANY

The Part-time MBA final project report is an ideal way to apply your learning to a business situation experienced by your company. You can leverage the knowledge and skills of your classmates and faculty to help conduct a report focusing on business innovation and transformation.

JOIN THE ESMT COMMUNITY

All part-time MBA students are full members of the ESMT student body. You have full, unrestricted access to the ESMT campus in Berlin and all on campus activities. You can join the ESMT's speaker series, both on campus or online and attend career events, alumni, club and other extracurricular activities.

DIVERSITY AND INCLUSION

ESMT Berlin encourages a conscious and serious effort from its students, staff, faculty, and administrators to prioritize the values and practices of diversity, equity, and inclusion within the school and to champion the same in academia and the business community.

KEY QUALITIES WE LOOK FOR IN APPLICANTS

- International outlook and intercultural competence
- A change and innovation mindset
- The ambition and motivation to study part-time alongside your full-time work

If you have any questions or want to discuss your candidature, please contact the Admissions team. Early applications are encouraged as space in the class is limited. You may also qualify for an application scholarship.

APPLICATION AND ADMISSION

To apply, you should have:

- At least three years of postgraduate professional experience
- An undergraduate degree or equivalent qualification
- Strong performance in the GMAT, GRE, or ESMT Admissions Test (BAT)
- English proficiency test scores, if applicable
- We will also ask you for professional recommendations and a video essay.

TUITION AND FEES

€ 39,500

FINANCING AND SCHOLARSHIPS

The tuition and fees for the Part-time MBA are €39,500, and include access to the online learning platform, all content, and required case study licenses. You will also receive a Smart Certificate that you can use to share your verified achievement with employers and on social media. When you are accepted into the program, we will ask you to pay a non-refundable deposit of €4,000. The remaining tuition is payable over two instalments.

Three **scholarships** are available to early applicants:

- 1st round application deadline receive a discount of €6,000 from their tuition.
- 2nd round application deadline receive a discount of €3,000 from their tuition.
- 3rd round application deadline receive a discount of €1,000 from their tuition.

Check out the dedicated page on our website for the updated deadlines.

TAX DEDUCTIONS

In many countries, including Germany, tuition for higher education and related costs are tax deductible.

For more information, please visit the tuition and fees page and consult your tax advisor.

PTMBA CLASS PROFILE

Cohort 2023

Average age

32 

Average work experience (year)

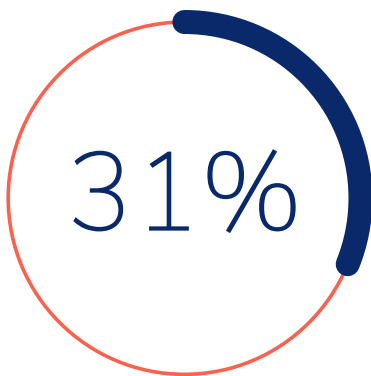
7 

Unique nationalities

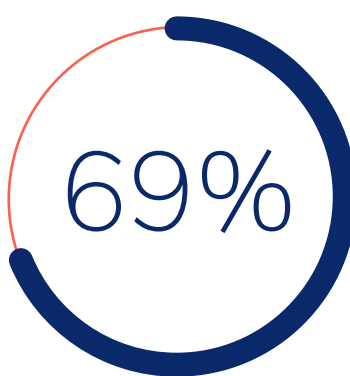
17 

Brazil
Bulgaria
China
Czech Republic
Georgia
Germany
Ghana
Hungary
India
Italy
Korea, Republic of
Nigeria
Poland
Romania
Spain
Turkey
Ukraine

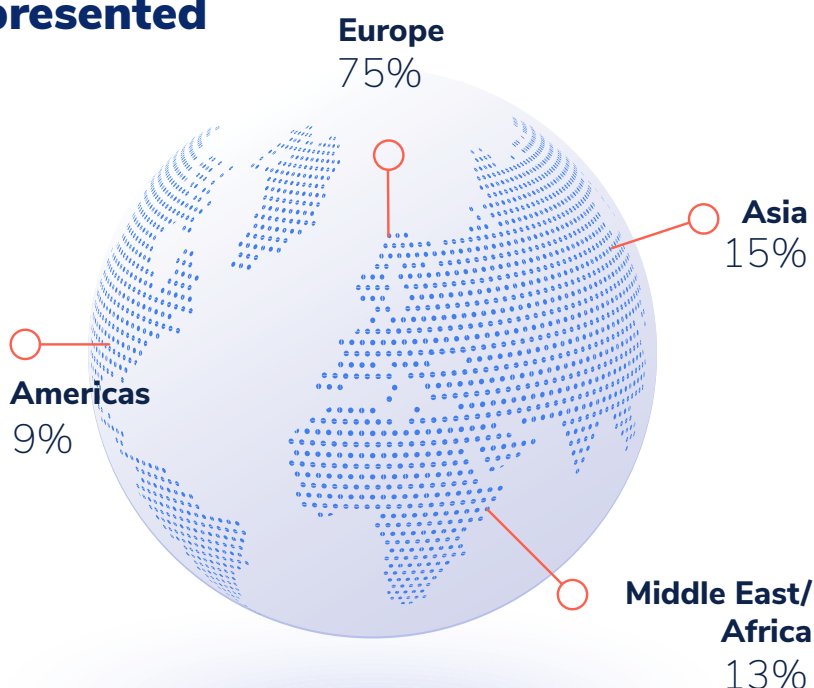
Women



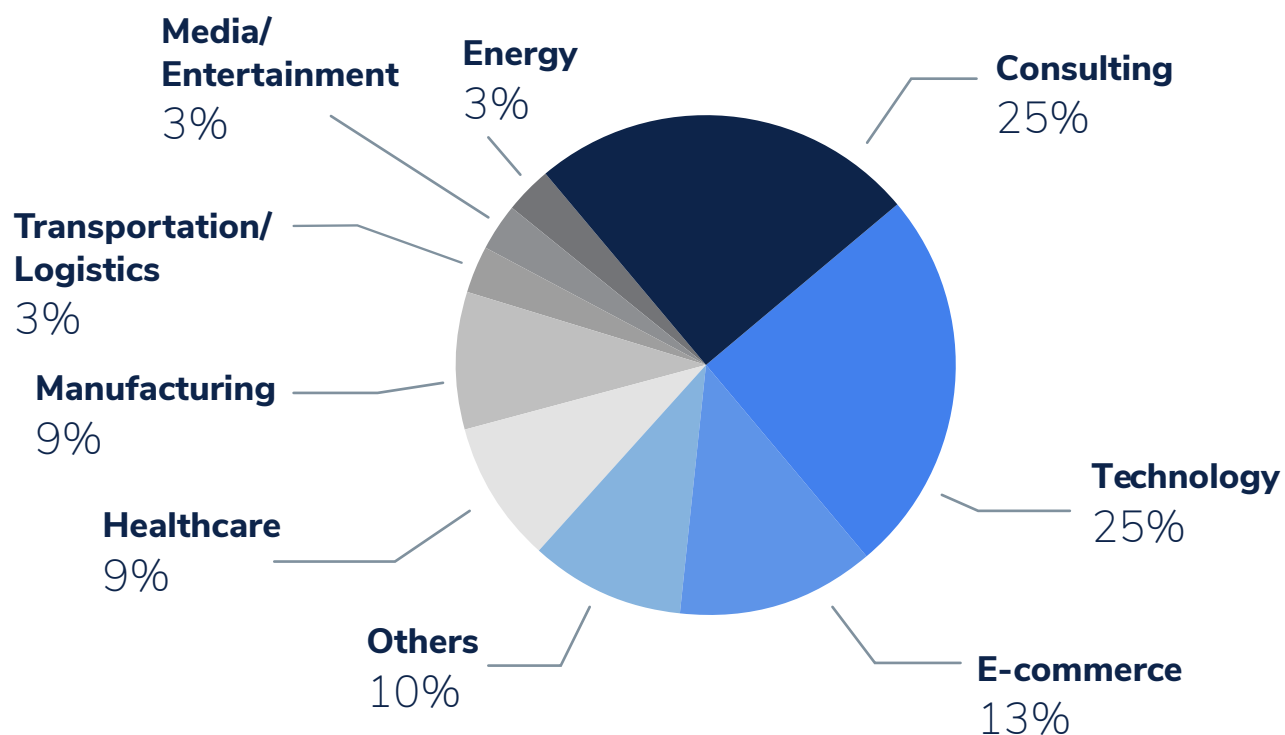
International



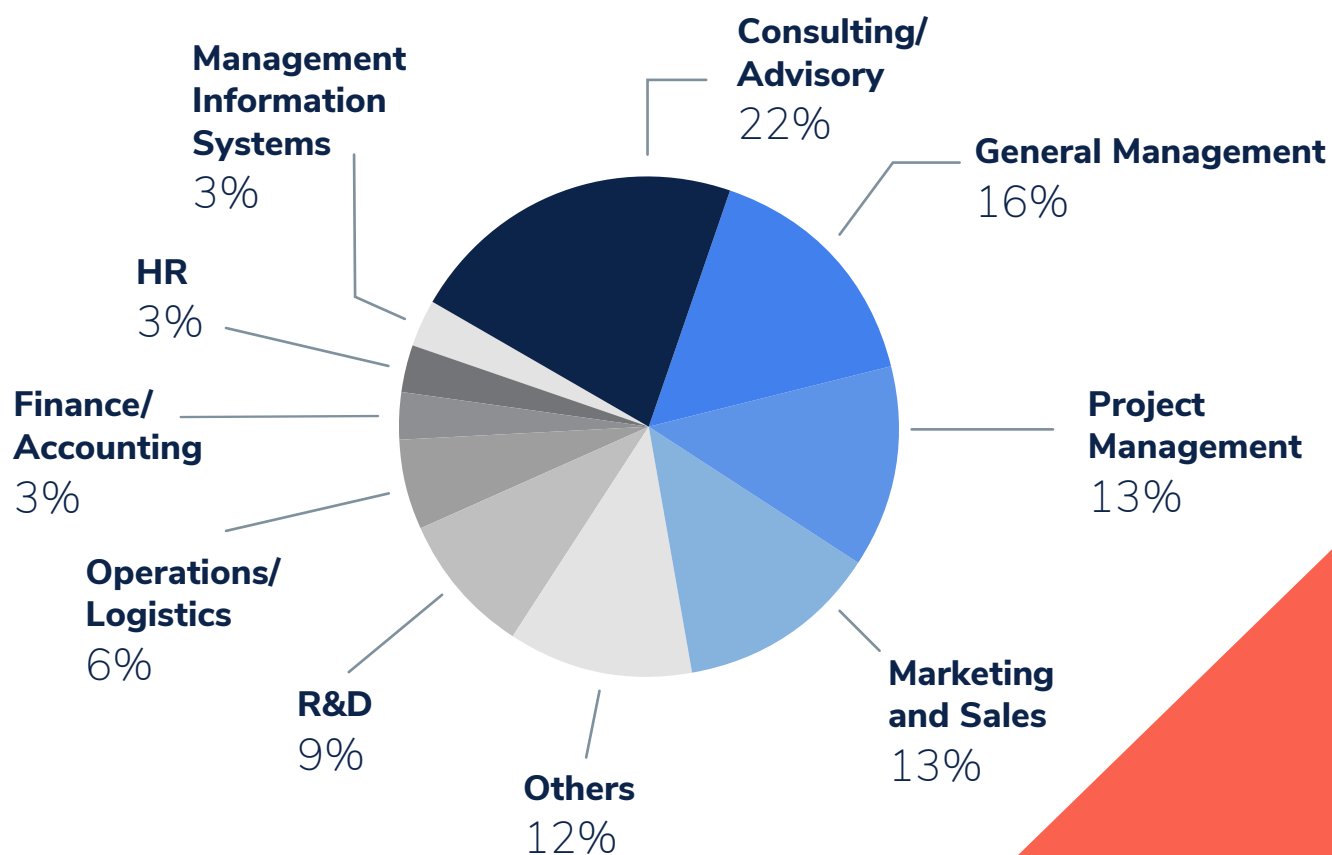
Regions represented



INDUSTRY BACKGROUND



JOB FUNCTION



Join us:



ESMT
BERLIN

ESMT Berlin is ranked as the best business school in Germany and in the top 10 in Europe.

Founded by 25 leading global companies, ESMT offers master's, MBA, and PhD programs, as well as executive education on its campus in Berlin, in locations around the world, online, and in a blended format of online and on-location.

Focusing on leadership, innovation, and analytics, its diverse faculty publishes outstanding research in top academic journals. The international business school provides an interdisciplinary platform for discussion of politics, business, and academia.

ESMT is a non-profit private institution of higher education, accredited by AACSB, AMBA, EQUIS, and Wissenschaftsrat, and is committed to diversity, equity, and inclusion across all its activities and communities.

esmt.berlin



Founders and benefactors:

